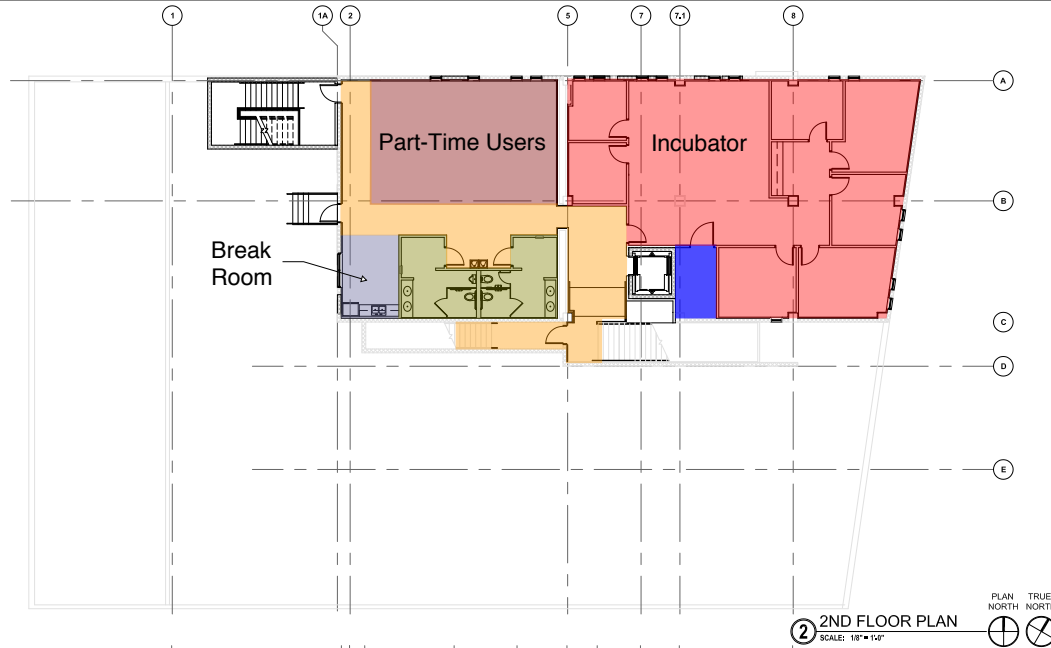
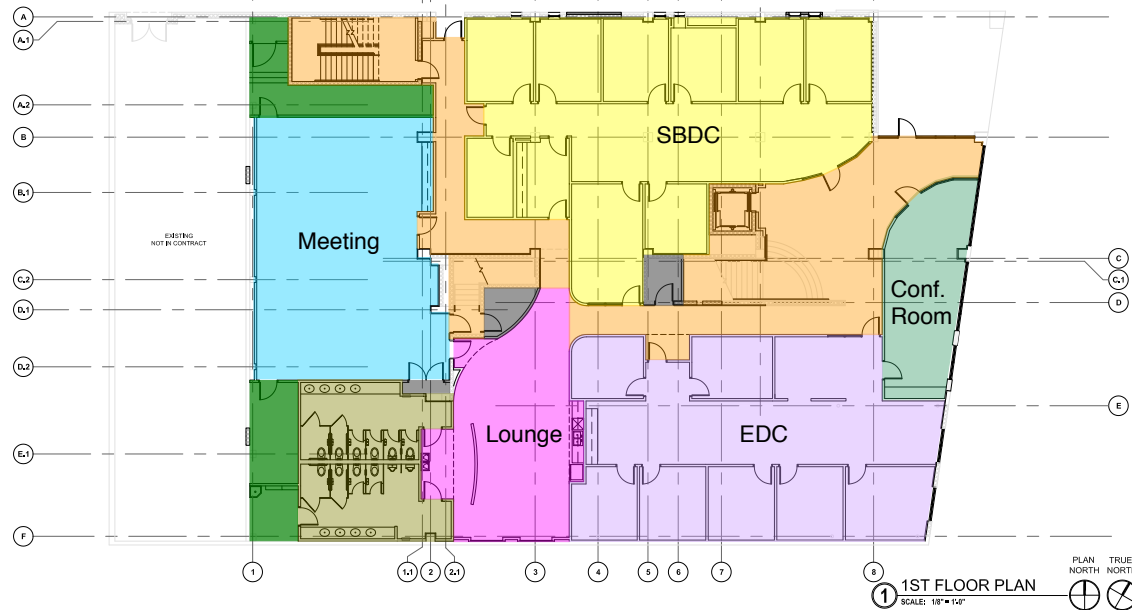


- Incubator - 2,017 SF
- Part-Time Users - 699 SF
- Circulation - 502 SF (Stairs and Elevator are counted once in the First Floor)
- Break Room - 144 SF
- Restrooms - 334 SF
- Mechanical - 87 SF



- SBDC - 2,516 SF
- EDC - 2,103 SF
- Meeting - 1,426 SF
- Circulation - 2,019 SF
- Conference - 491 SF
- Lounge - 873 SF
- Storage/Support - 490 SF
- Electrical/IT - 127 SF
- Restrooms - 658 SF



NO.	DATE	DESCRIPTION

Casabella Architects, LLP
 302 UNDERTRAGE, SUITE 104
 AUSTIN, TEXAS 78738
 PHONE: 512-485-5286
 FAX: 512-485-5286
 www.casabella-architects.com

Casabella
 ARCHITECTS

BUSINESS RESOURCE CENTER
 THE CITY OF SAN ANGELO
 69 N. Chabourne, San Angelo, Texas 76903

NOT FOR
 CONSTRUCTION,
 PERMIT,
 OR BID

©2011 Casabella Architects
 All Rights Reserved. These
 designs / drawings are the sole
 property of the Architect.
 Casabella Architects, They may
 not be reproduced in any form,
 by any method, for any purpose
 without previous written
 permission from the Architect.

JOB NO:	201108
PHASE:	BD SET
DRAWN BY:	
CHECKED BY:	
DATE:	OCT. 17, 2011

NEW CONSTRUCTION PLANS

SHEET
A-101